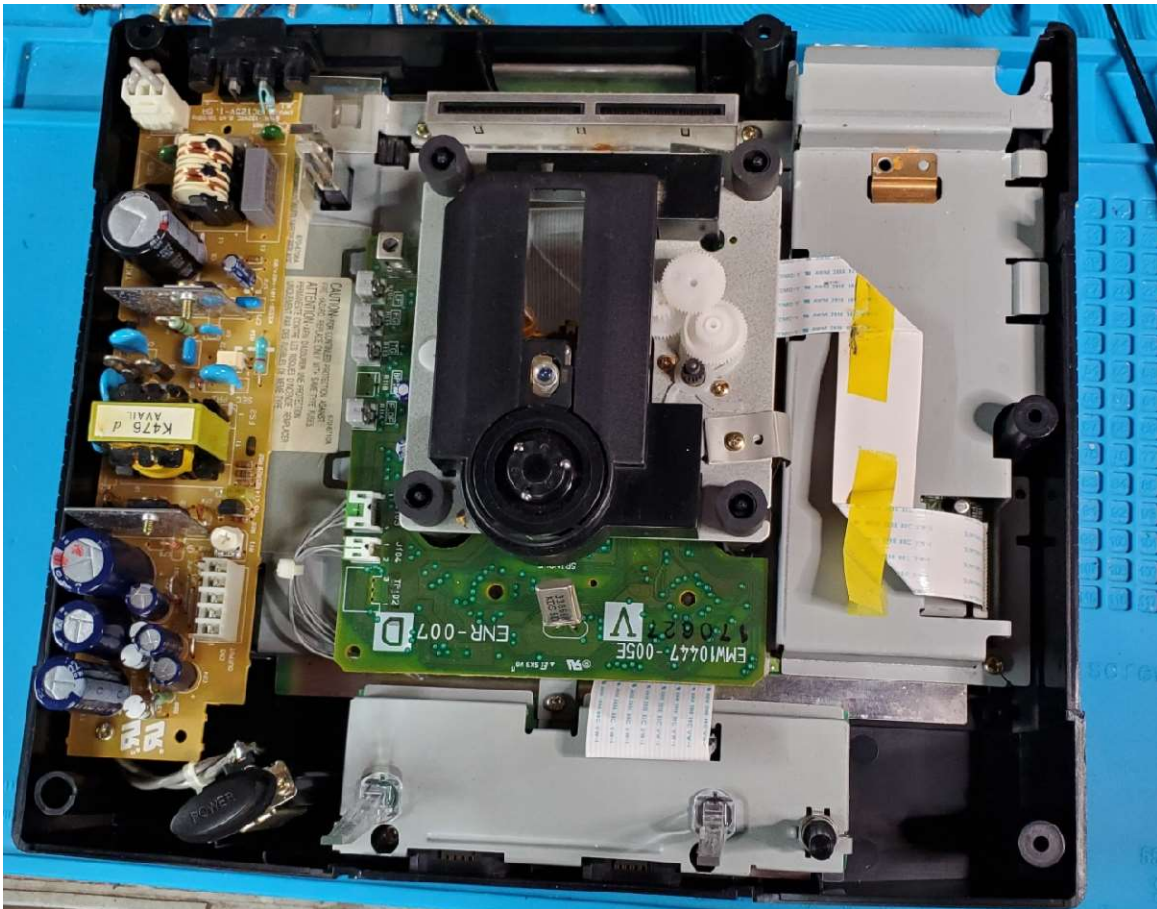
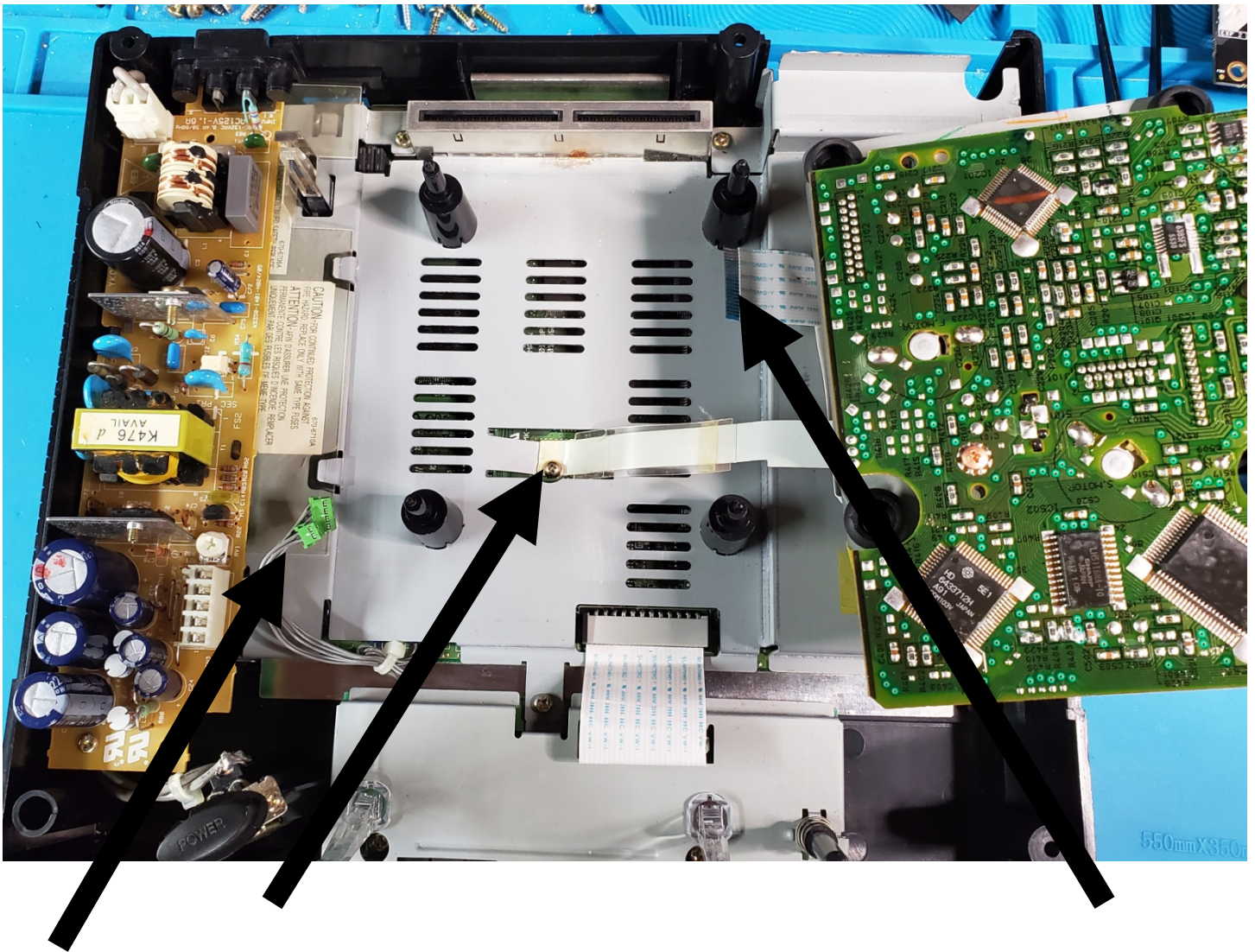


Stone **Age** Gamer Saturn MODE mount install type B.

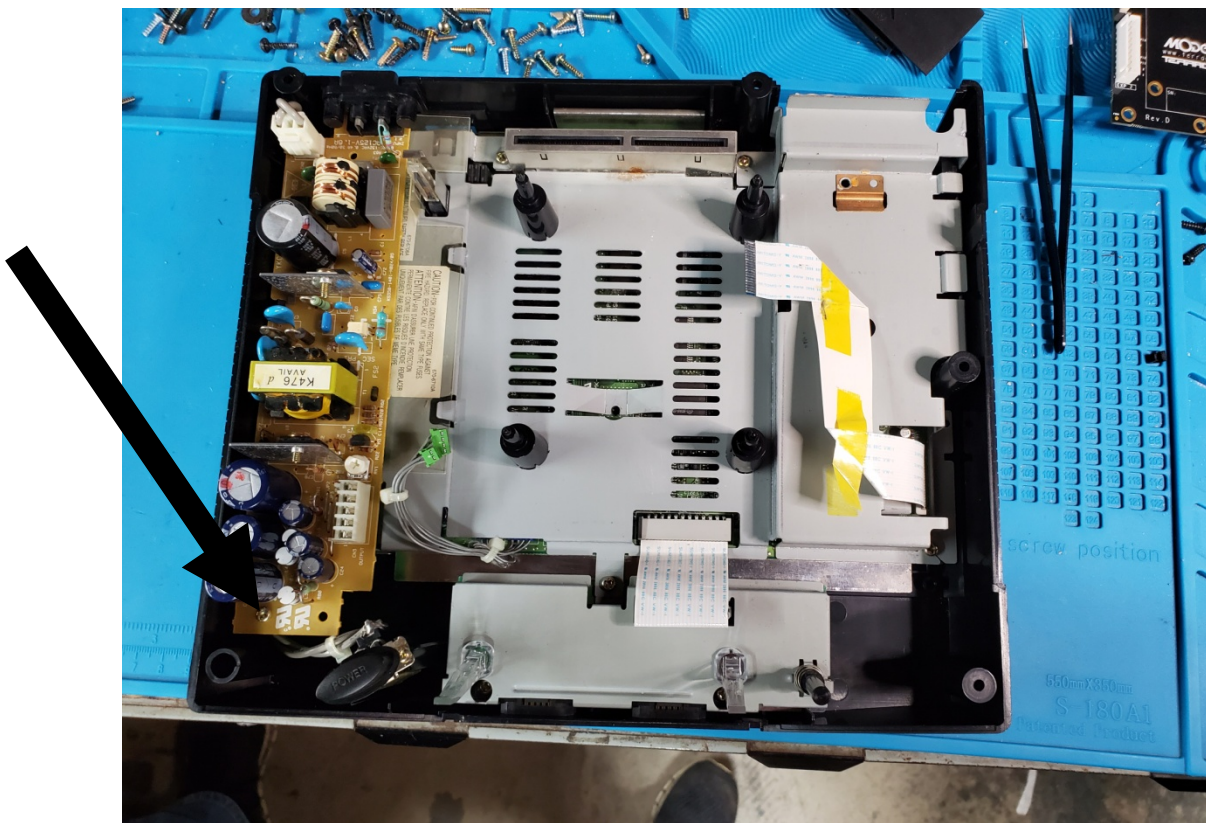
Remove 5 screws from bottom of Saturn. Remove top of case.

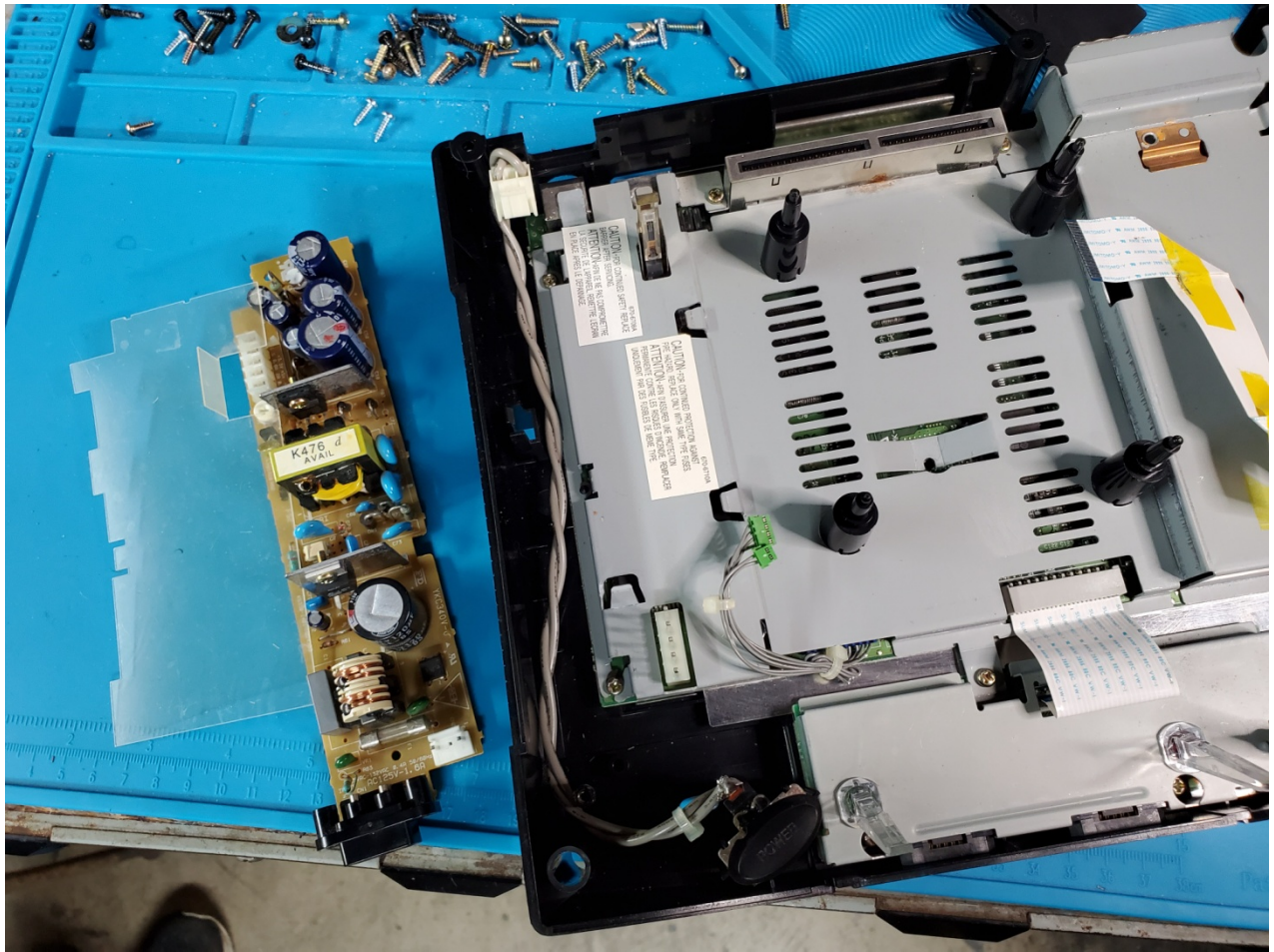


To remove ROM. Disconnect ribbon cables from ROM and screw.

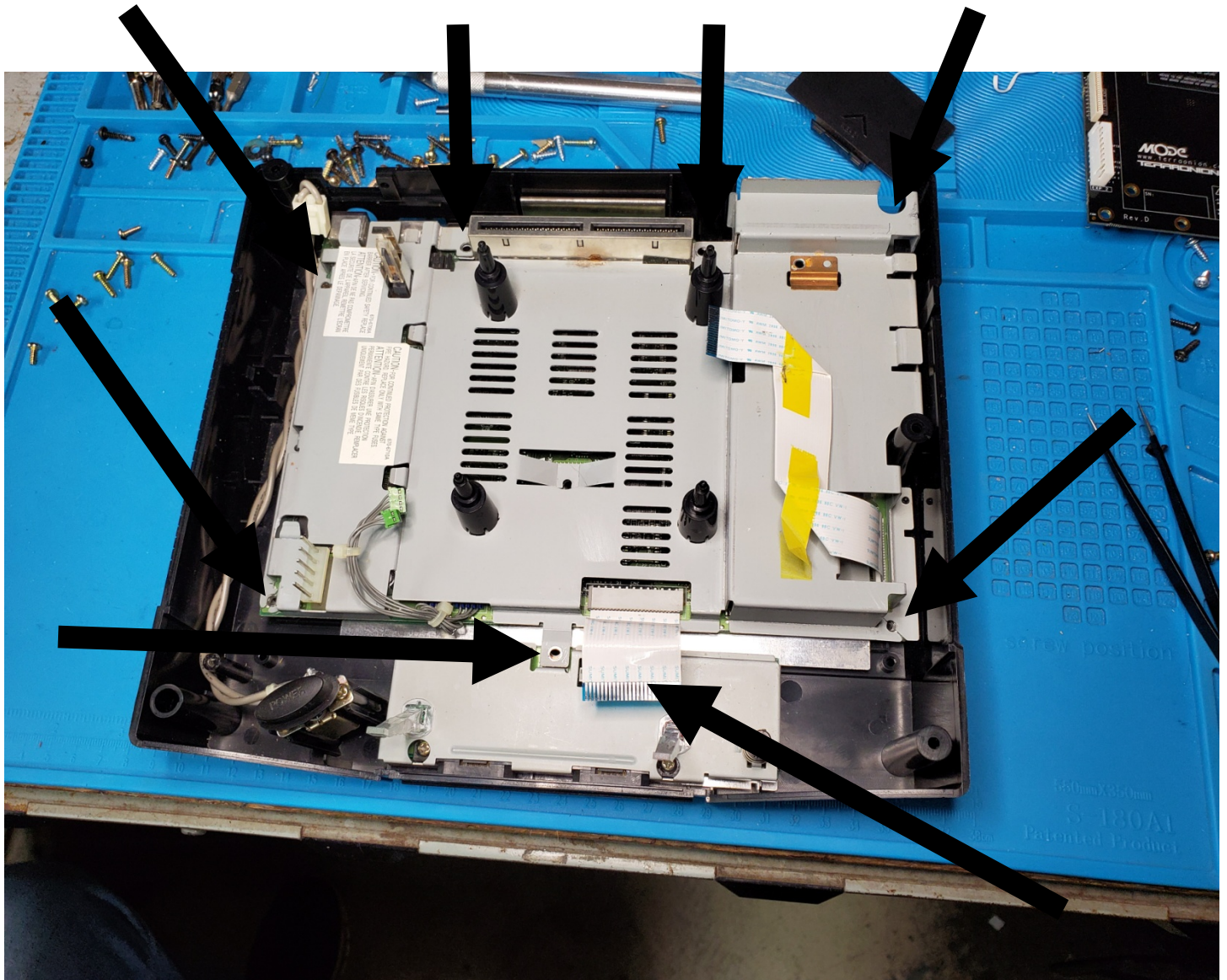


Remove 3 screws from power supply and remove power supply.

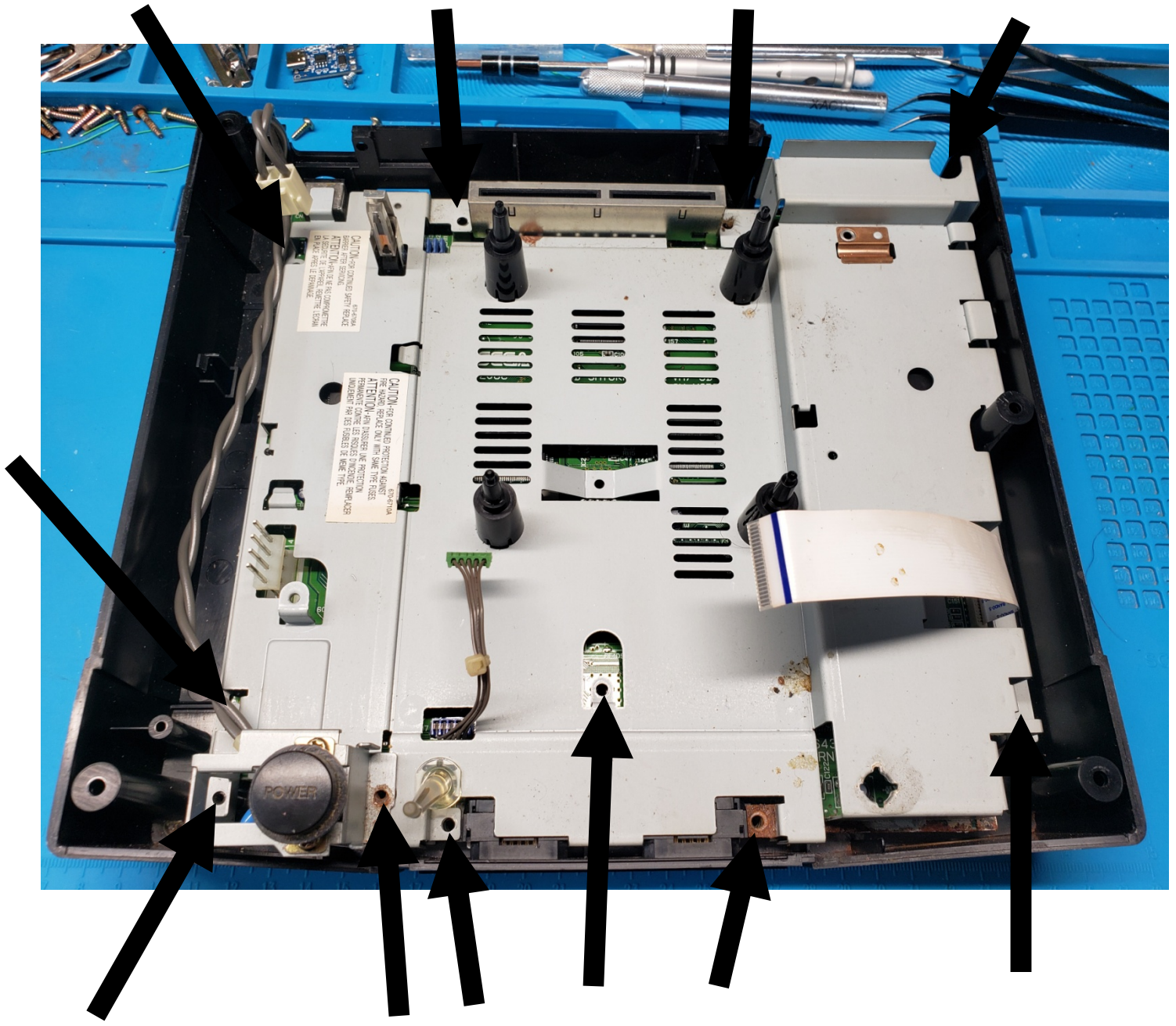




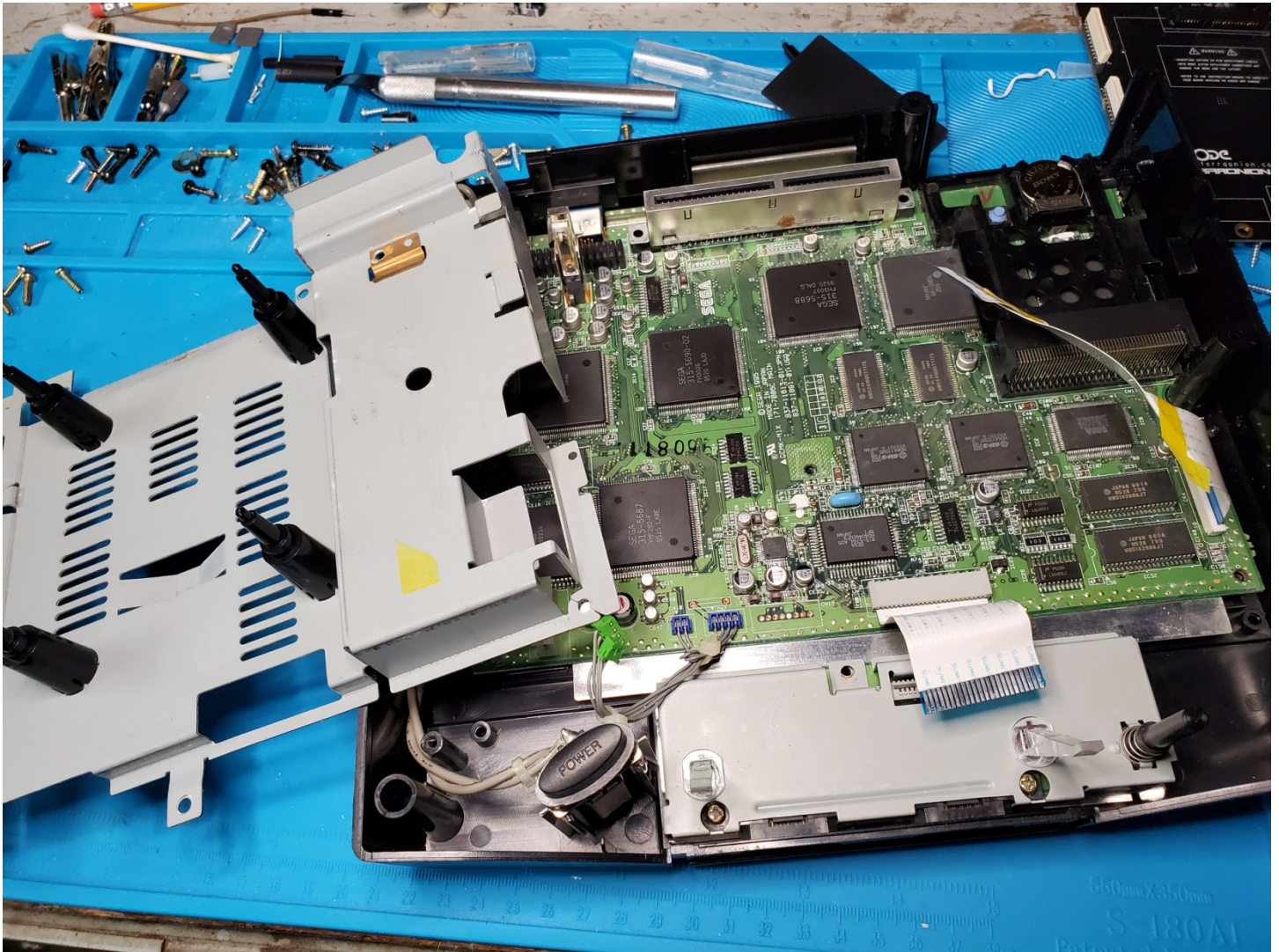
Remove screws securing hard metal shielding and controller port ribbon if you have one. Some Saturns may require removal of power button also.



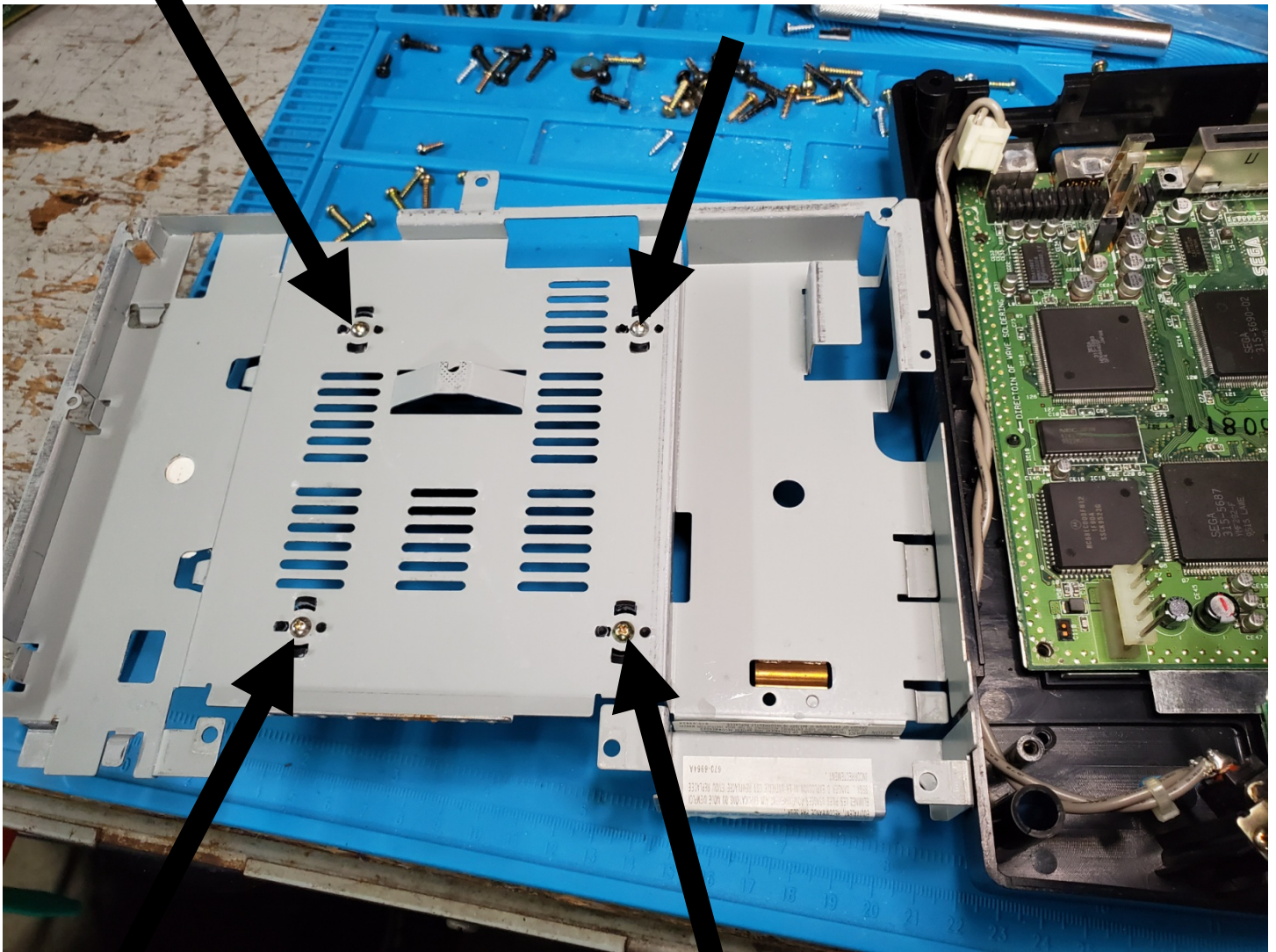
OR



Carefully remove hard metal shielding from Saturn PC board. Remove controller and ROM ribbons if needed. Removal of PC board from case will make it easier to reinstall later.

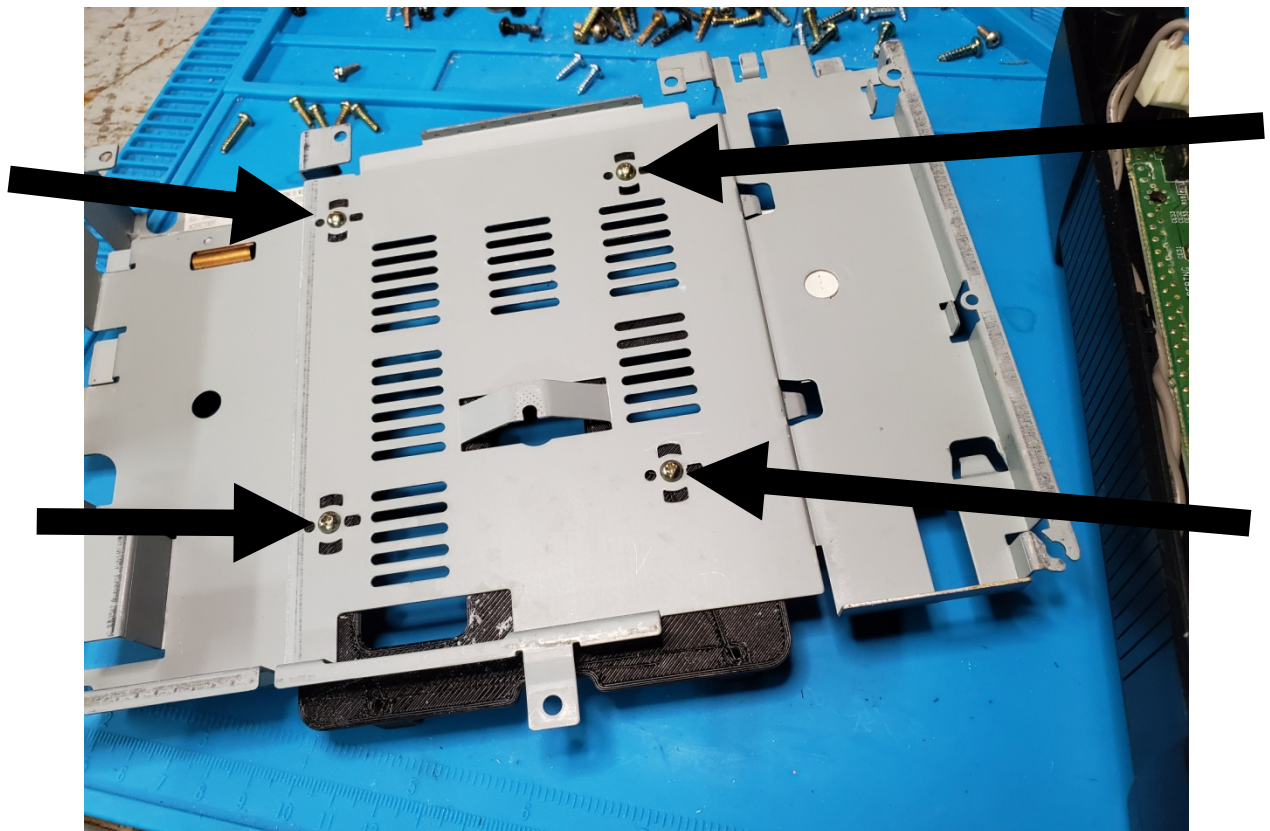


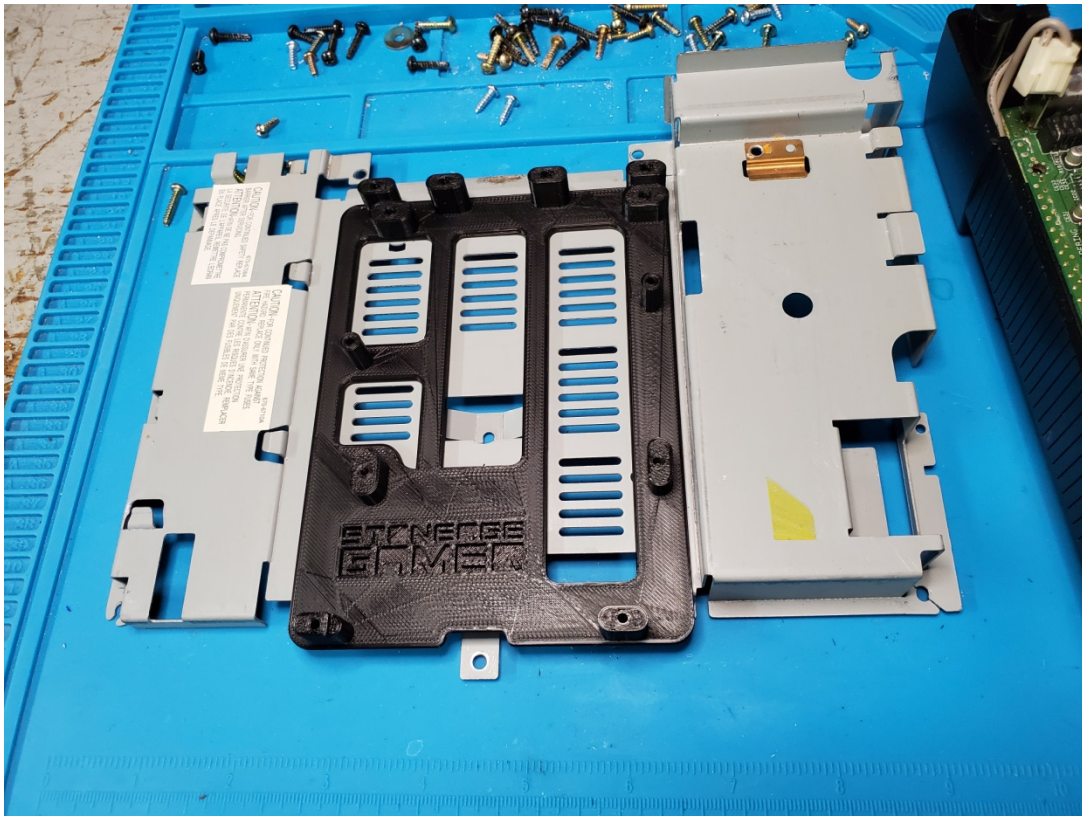
Turn hard metal shielding over and remove 4 screws securing the 4 black ROM mounts. Keep screws.





Install SAG MODE mount using the 4 screws from the 4 ROM mounts.





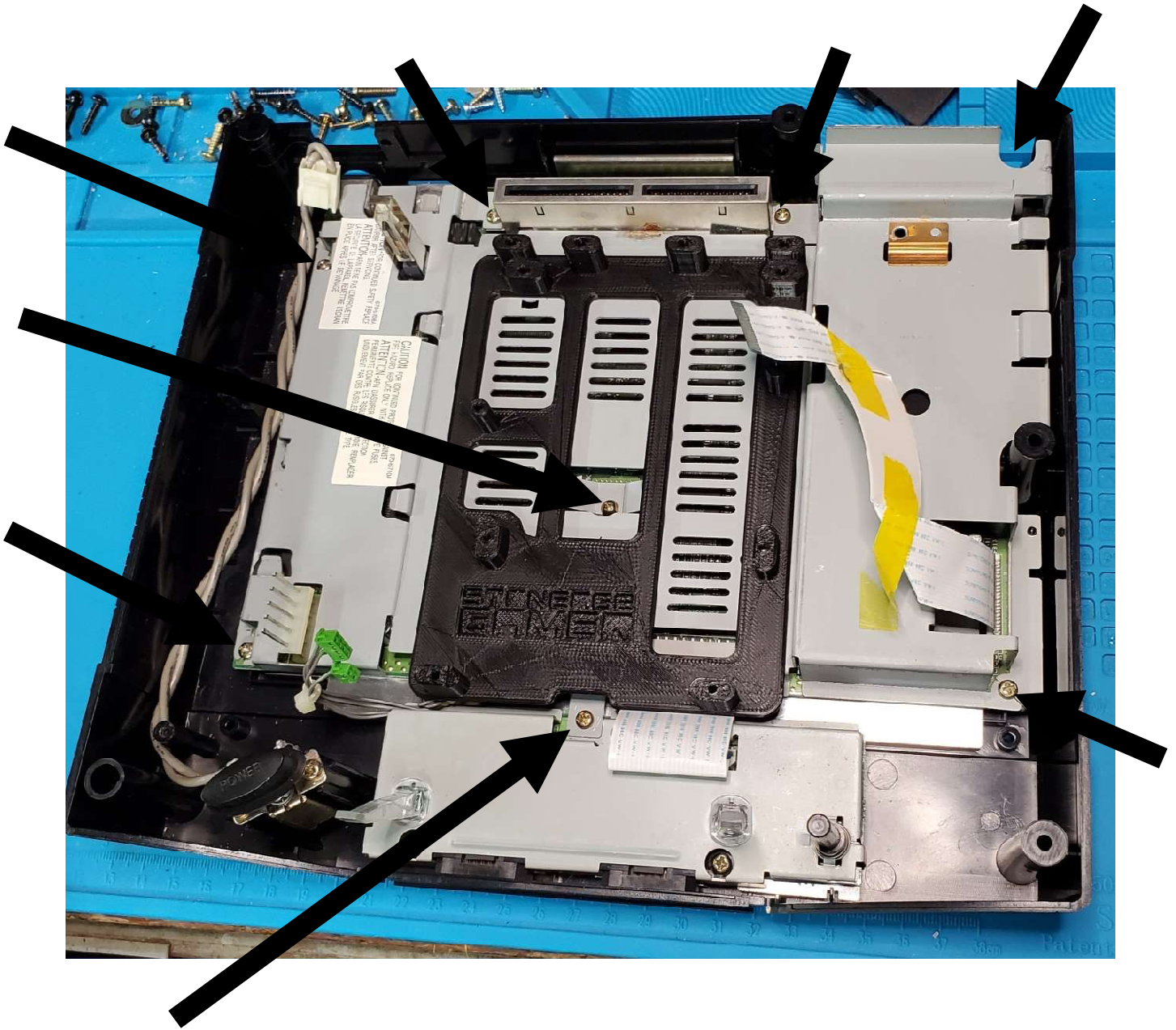
Place assembled hard metal shielding on Saturn PC board. If you have a controller port ribbon now is a good time to install it.



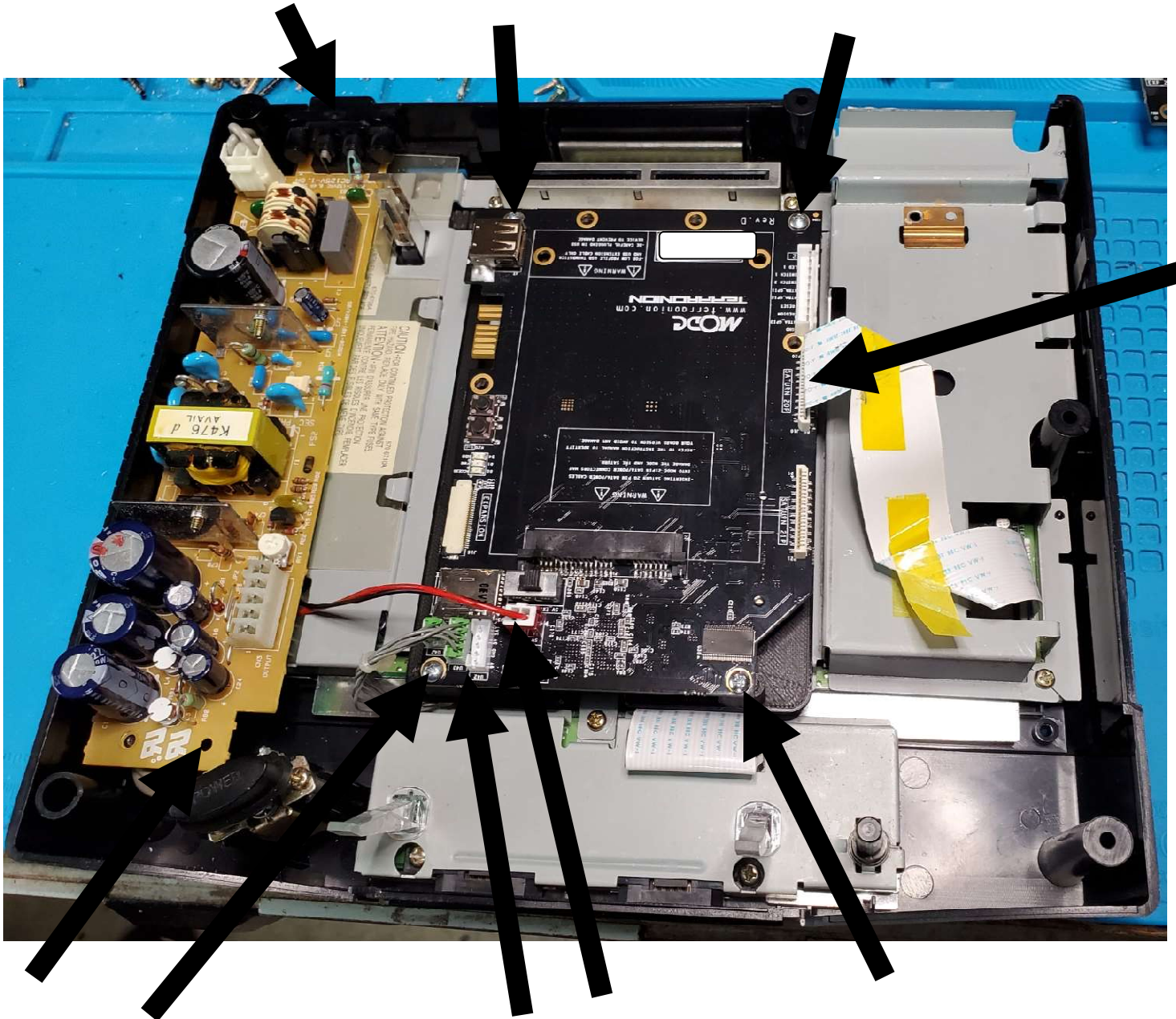
Place Saturn PC board and metal shield into bottom of the Saturn case.

Plugging the controller port ribbon to the controller PC board first.

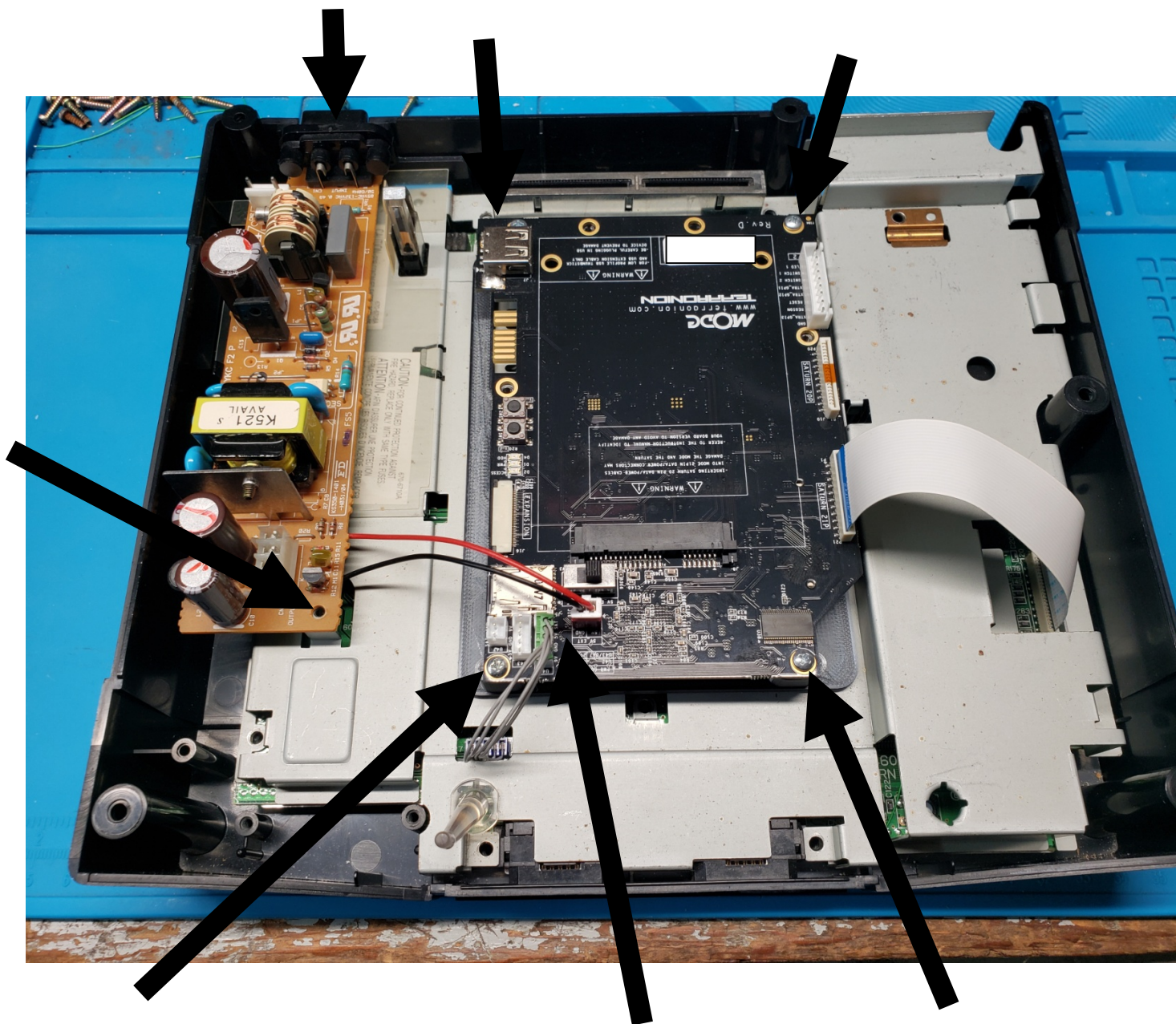
Replace screws holding the PC board. The longer screws are for the cartridge slot and controller port if you have that style.



Install MODE using the 4 included screws. Plug in ROM ribbon and ROM connectors to the MODE. Install power supply with 3 screws you removed earlier and power plug from MODE kit.



OR



Plug in you HDD, Micro SD, or USB.

Replace case top, turn over, and install 5 screws in the bottom.

Enjoy!!!