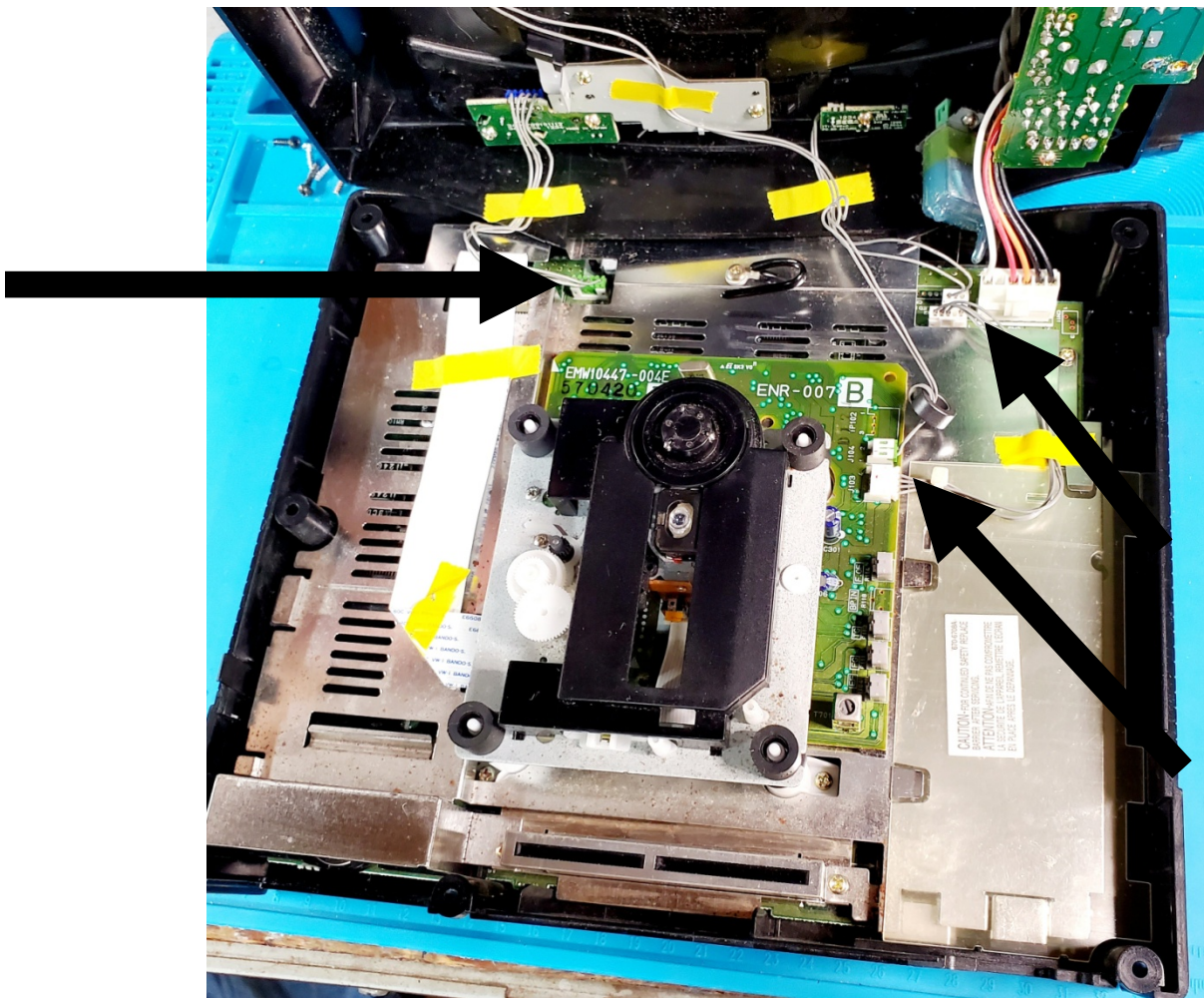


Stone Age Gamer Saturn MODE mount install type A.

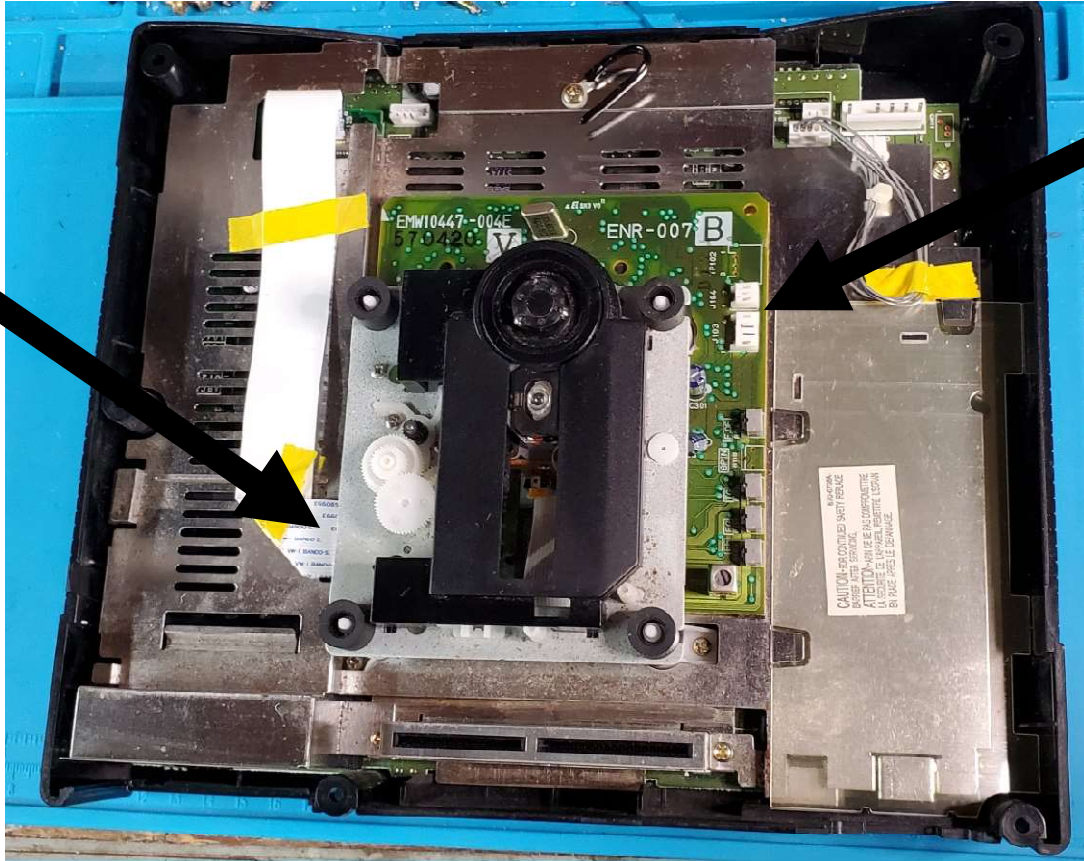
Remove 5 screws from bottom of Saturn. Remove top of case.

If power supply is in top of case unplug connectors and set top of case to the side.



Next lift ROM and unplug ribbon cables.

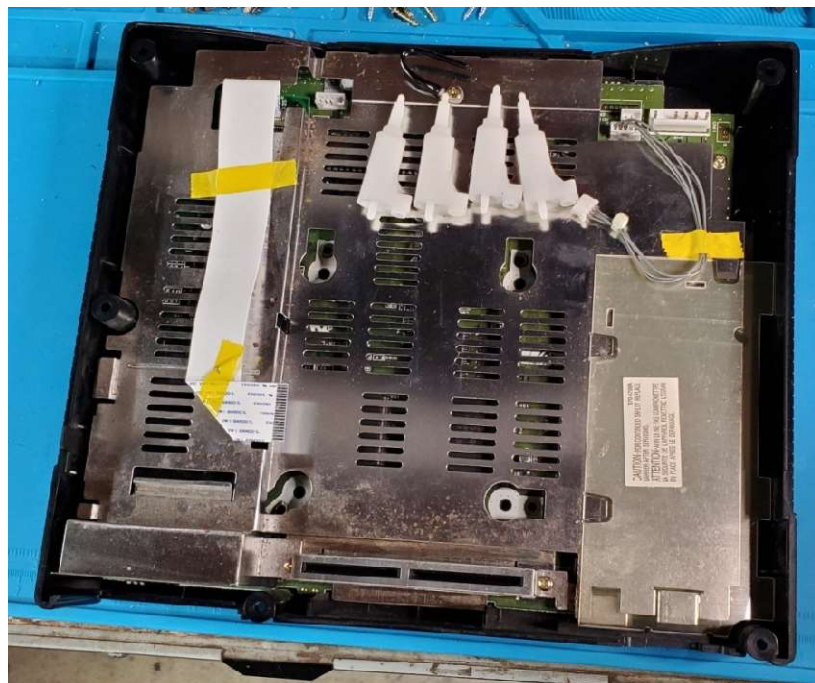
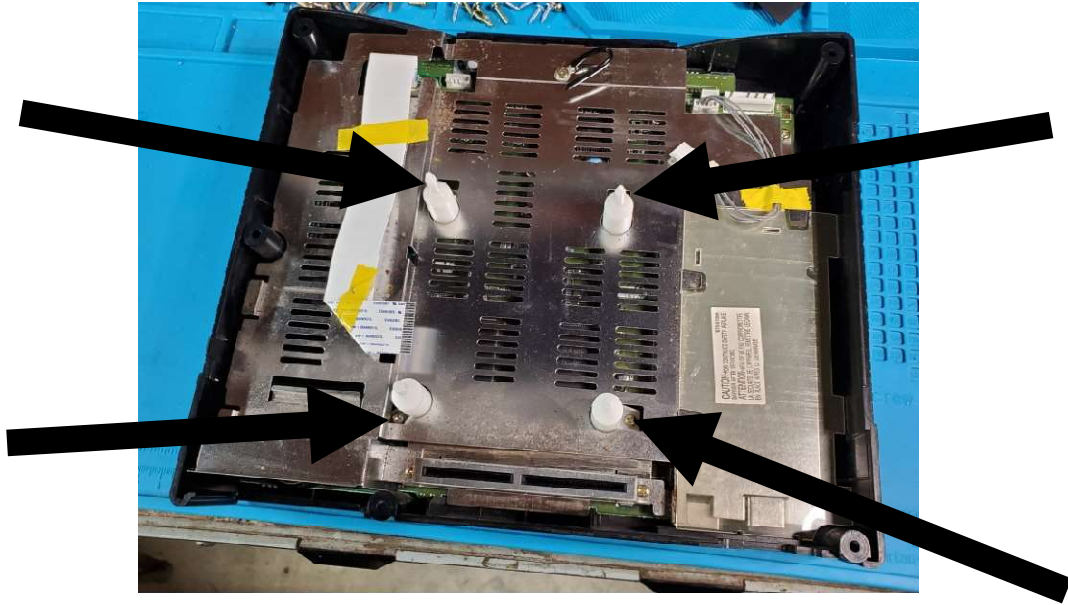
Set ROM to the side it will not be re-used.



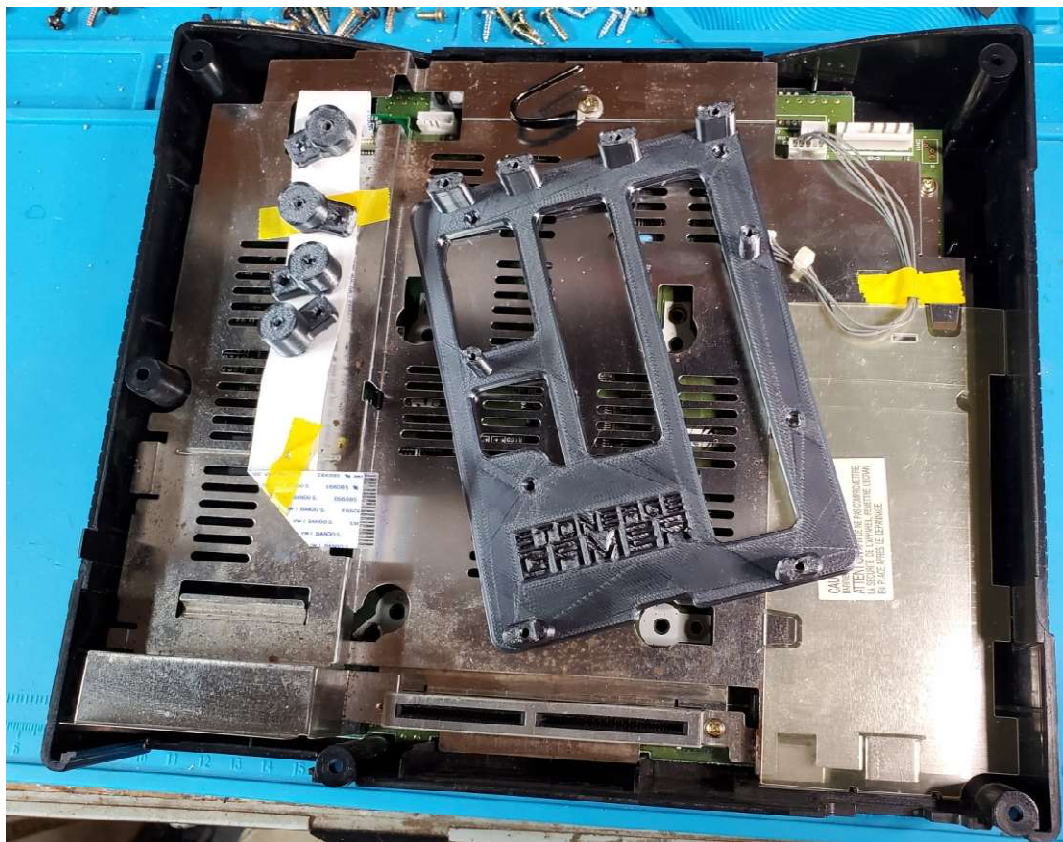
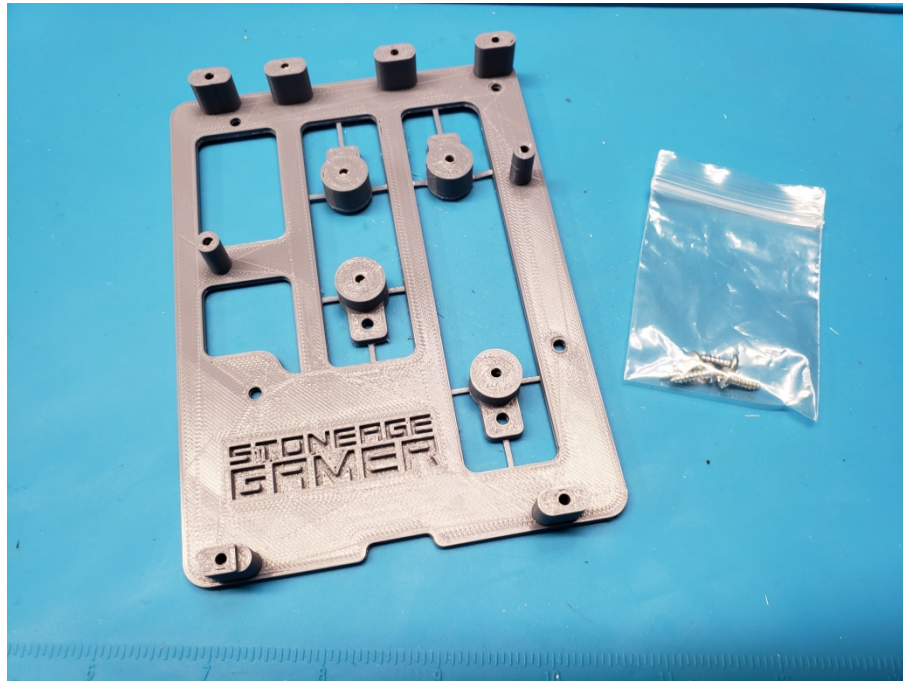
Remove the 4 white ROM mounts.

You may need to remove the flimsy metal shielding.

Keep the 4 screws.



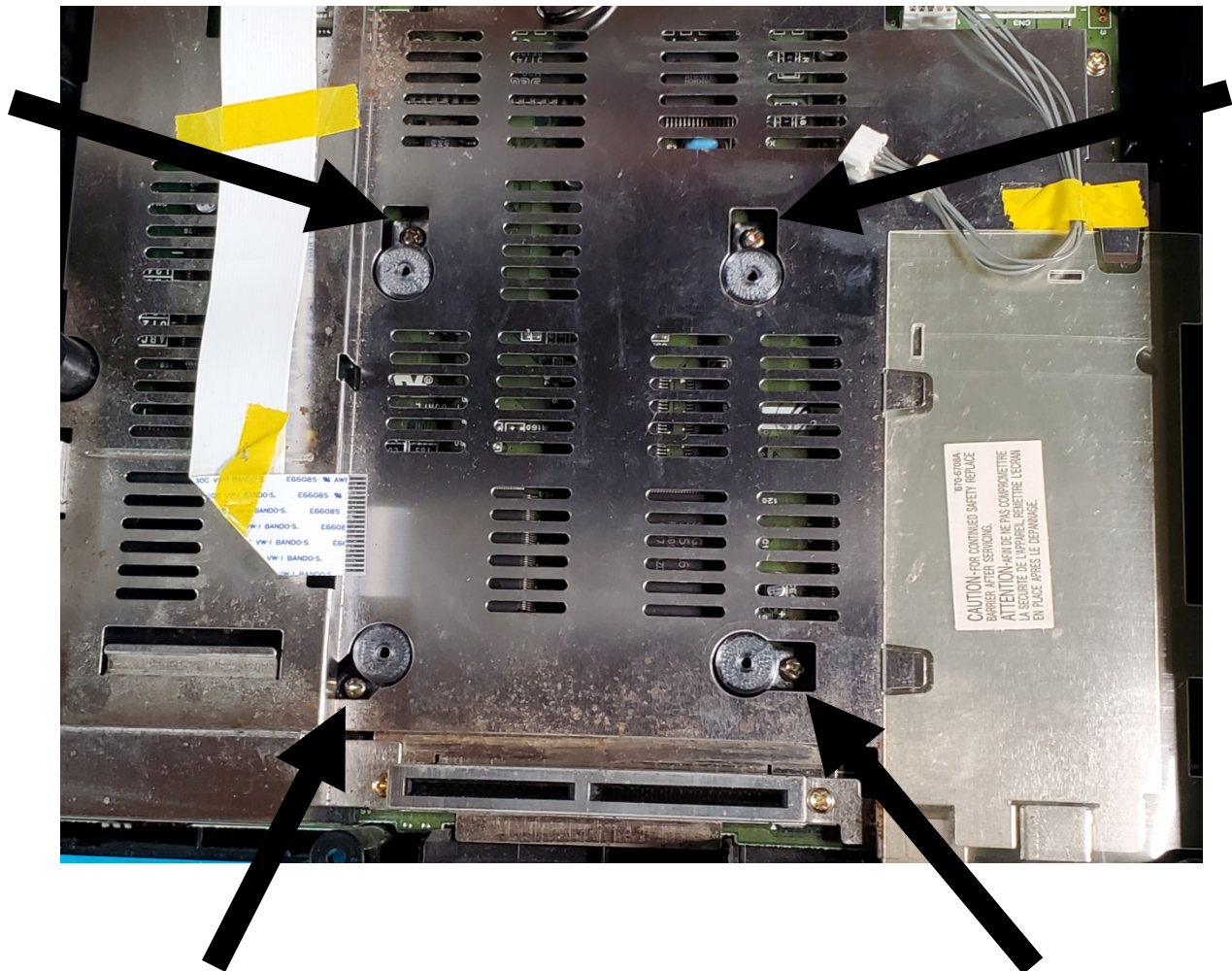
Cut or breakout standoffs from MODE mount.



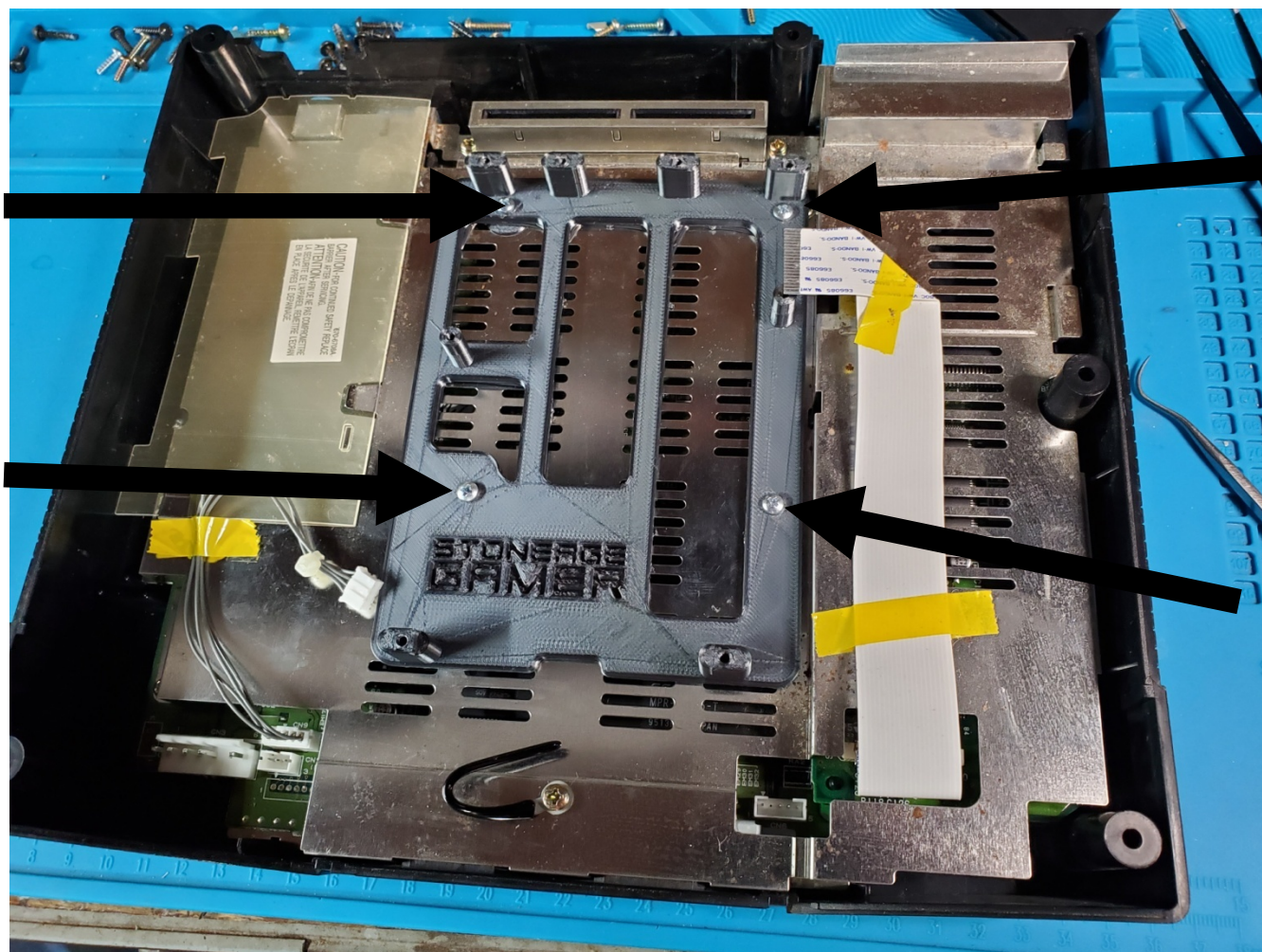
Mount the 4 standoffs to the Saturn using the 4 screws you removed earlier. You may need to remove the flimsy metal shielding.

Reinstall metal shielding if removed.

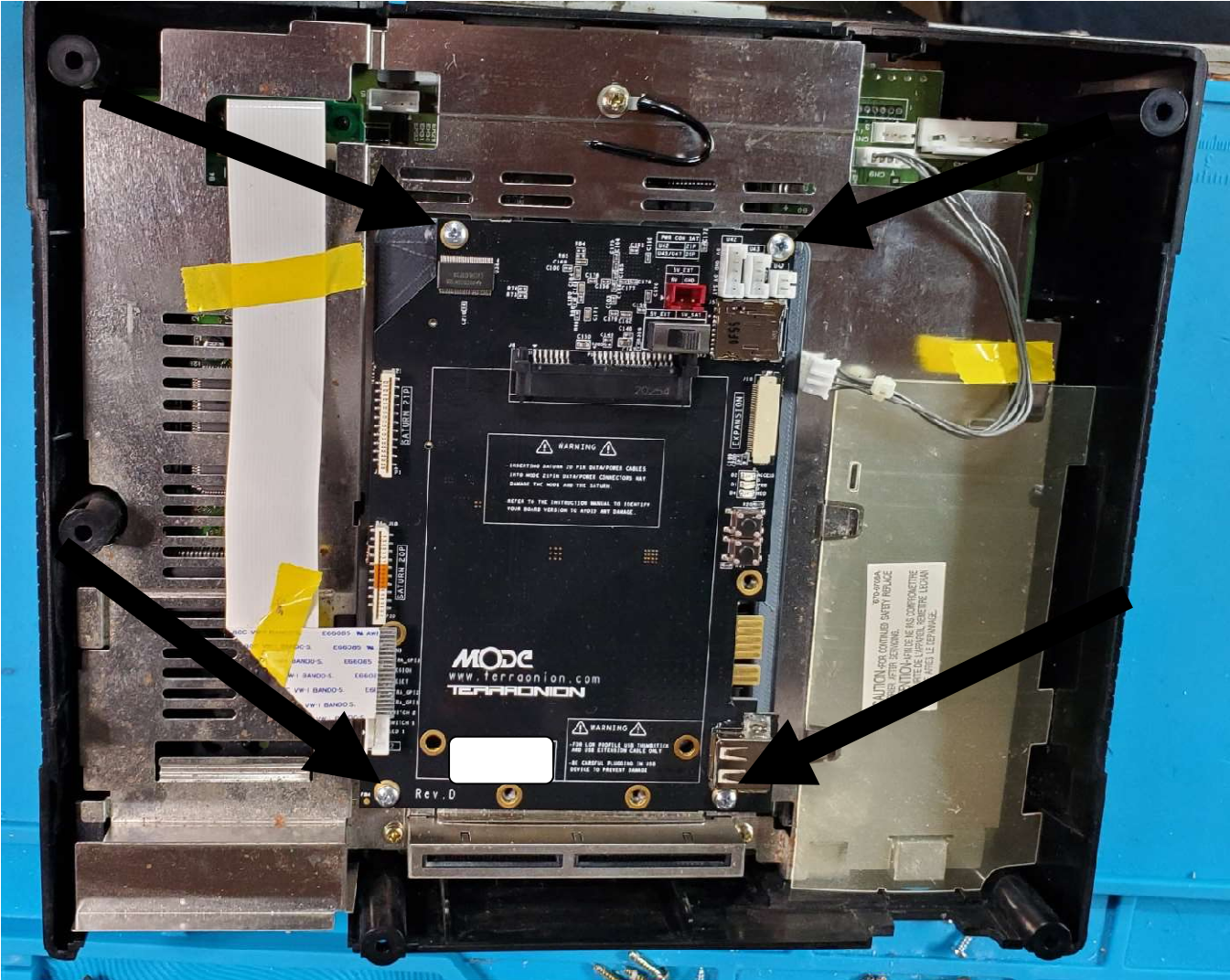
The metal shielding should not be resting on the standoffs.



Using 4 of the included screws mount the SAG MODE mount to the standoffs.



Next using 4 of the included screws mount the MODE to the SAG mount.



Plug in ribbon and connectors to the mode. Plug in you HDD, Micro SD, or USB. Plug in connectors from top of the case.

Install top of case and install 5 screws.

ENJOY!!!

